



Power Bond

TECHNICAL DATASHEET

Version: 2016-09-22

PRODUCT DESCRIPTION

Solvent-free, acrylic/water based grab adhesive with extreme adhesive grab and high final strength. The final strength is achieved after only one day. The adhesive is easily applied with a cartridge gun, without it running. The adhesive has a good filling ability and levels off roughness in the substrate. Provides a rigid glued seam with high bonding strength with the bonding of surfaces where at least one of the surfaces is absorbent. Suitable for bonding in indoor environments, or where the seam is protected from moisture and rainfall. Adhesive residue is easily washed away with water.

AREA OF USAGE

Power Bond is used to glue the vast majority of types of materials on dry substrate. Primarily used indoors or other areas without elevated humidity. Use the adhesive when it is required that the glued object will be attached without support or when there is a requirement of a short curing time

Adheres to virtually all existing building materials such as: wood, metals (lacquered and untreated), concrete, metallic objects, ceramic materials, PVC, glass, stone, foam/cellular plastic and plastics (however not PE/PP/PTFE). At least one of the surfaces must be absorbent/porous.

WORKING INSTRUCTION

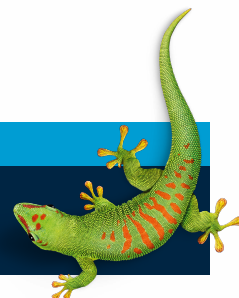
The surfaces should be dry, clean and free of grease. Cut the tip of the cartridge to the appropriate size. Applying to one surface by means of a syringe gun. Apply glue lines 5 mm wide in rows with 30 mm spacing. Press for 10 seconds to about 2-3 mm layer. The strength in the glue starts to build-up after a few minutes. The bonded object can generally be left without support or clamps after this (providing that the weight initially does not exceed 110 kg per square meter of adhesive surface). Final bonding strength is achieved after 1 day. Uncured adhesive is washed off with water. Hardened adhesive can be removed mechanically. The strength of a glued joint will never be higher than the bearing capacity of the substrate. With plastic or rubber, always test the glue first. The glue does not adhere to the fatty plastics (PP/PE/PTFE).

SAFETY

The product's contents are not classed as hazardous to health or flammable according to applicable legislation. The product is free of biocides. For more information, refer to the Safety Data Sheet.

CONTACT US

TEL +46 (0)42-19 50 00
info.se@bostik.com



TECHNICAL DATA

Properties before applying	
Consistency	smooth mass
Storage life	At least 18 months in un-opened packaging. Store in a cool, dry place.
Density	1.30 g/cm ³
Properties before applying	
Working temperature	5 °C to 30 °C
Curing system	Cures via heat
Colour	Beige
Adhesive usage	Glue line ø 5mm 15 lpm/l
Highly flammable	No
Application	Hand Sprayer

CONTACT US

TEL 042-19 50 00

info.se@bostik.com



Bostik AB, Strandbadsvägen 22, Box 903, SE-251 09 Helsingborg Tlf: +46 (0)42-19 50 00, Fax: +46 (0)42 19 50 21, www.bostik.se

Disclaimer: The technical data we present, as well as our instructions and recommendations are all based on a variety of tests and our experience. They are intended to help the user to find the most suitable working method and get the best possible results. Since the users working conditions is beyond our control, we cannot accept any responsibility for the results obtained by the product.